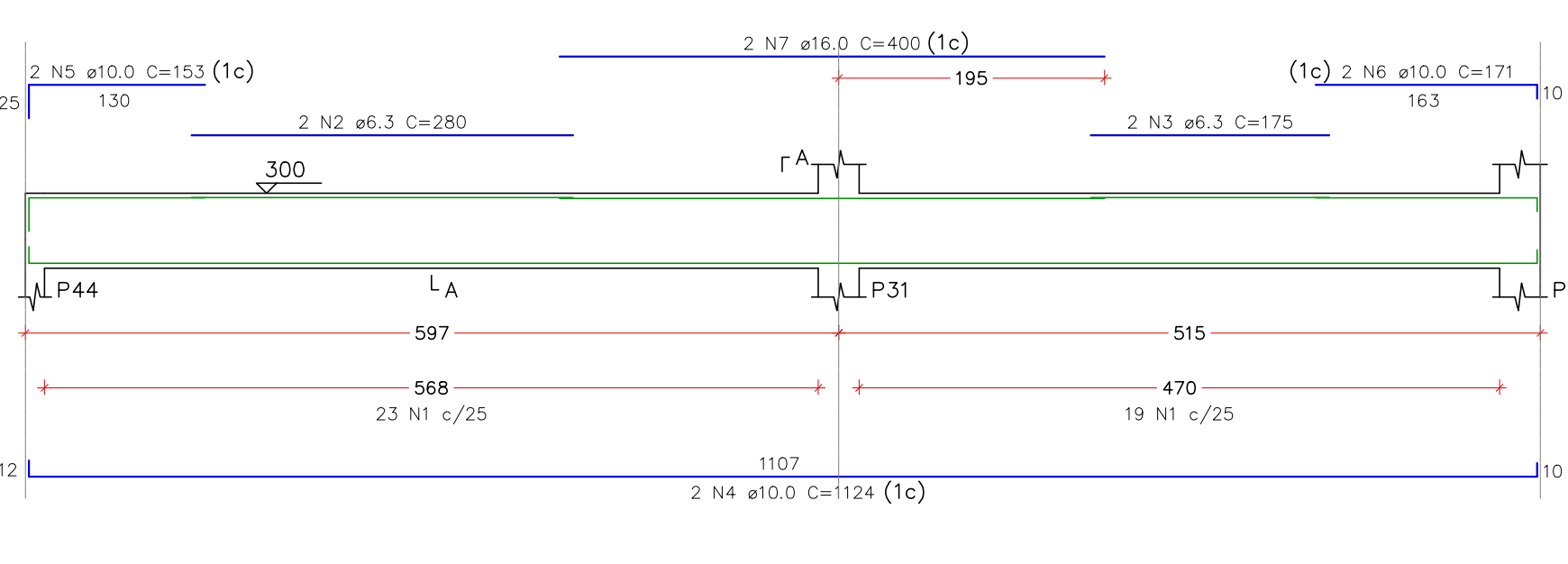
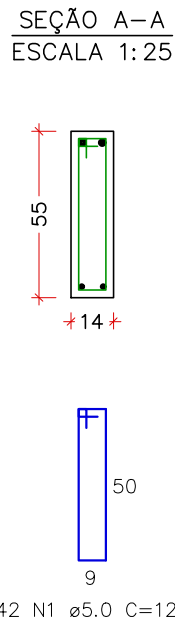


PROJETO ESTRUTURAL – CONSTRUÇÃO DA UBS DO BAIRRO MORUMBI
ESCALA INDICADA

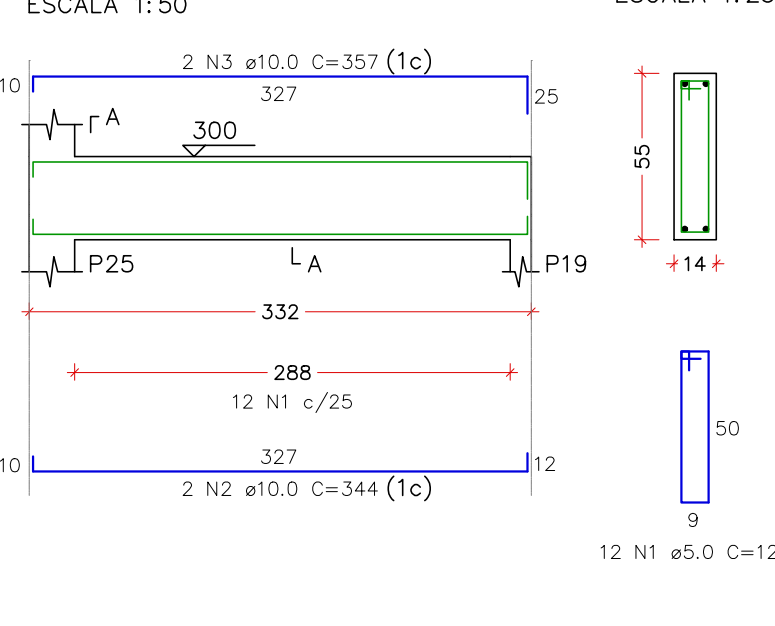
VC31
ESCALA 1:50



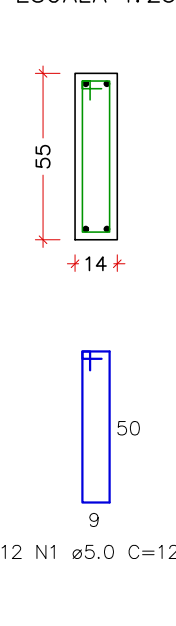
SEÇÃO A-A
ESCALA 1:25



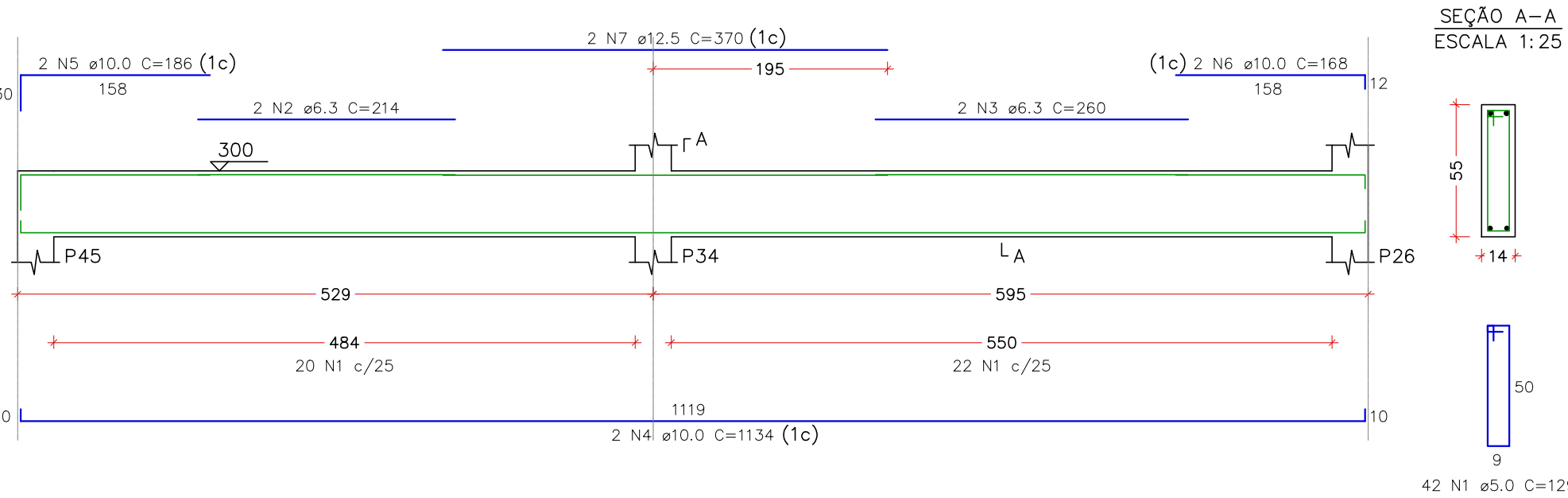
VC32
ESCALA 1:50



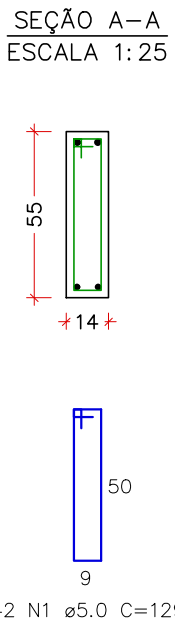
SEÇÃO A-A
ESCALA 1:25



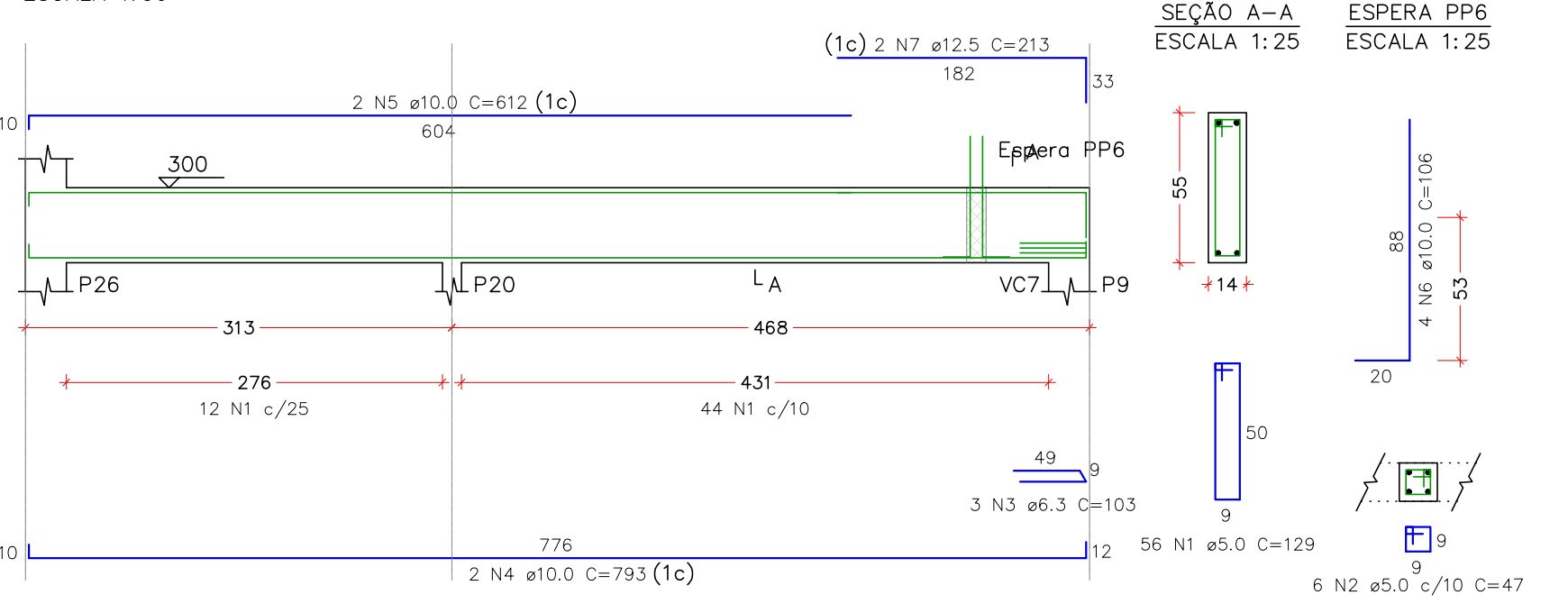
VC33
ESCALA 1:50



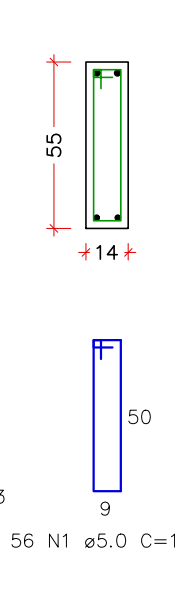
SEÇÃO A-A
ESCALA 1:25



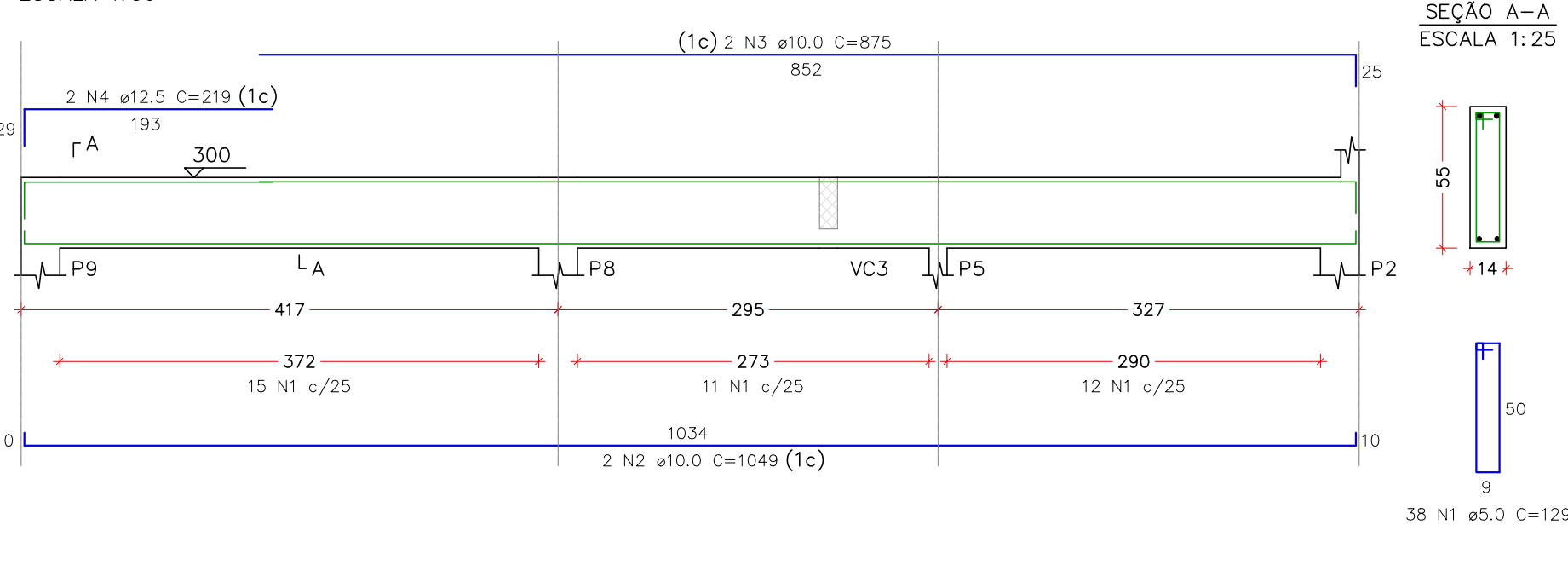
VC34
ESCALA 1:50



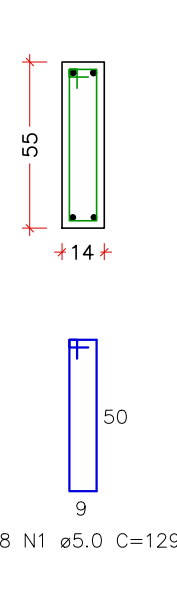
SEÇÃO A-A
ESCALA 1:25



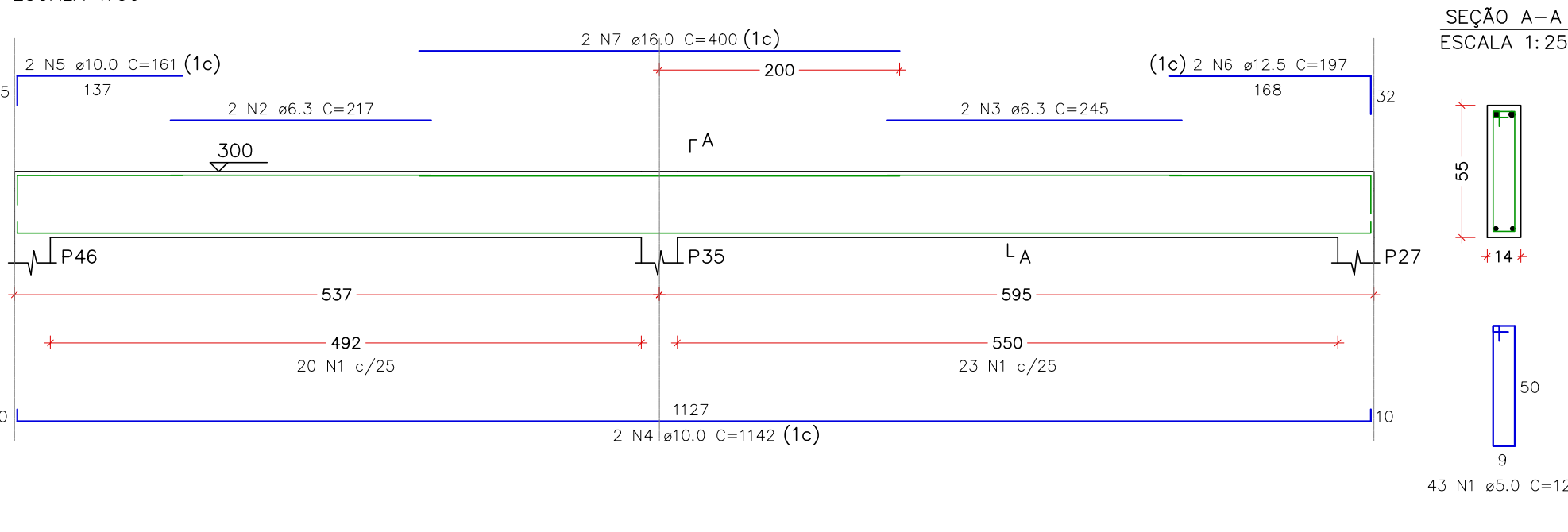
VC35
ESCALA 1:50



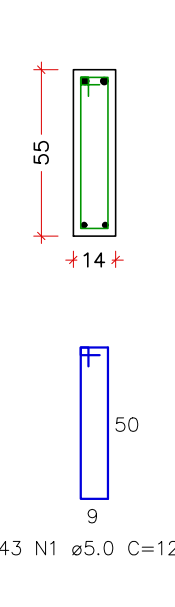
SEÇÃO A-A
ESCALA 1:25



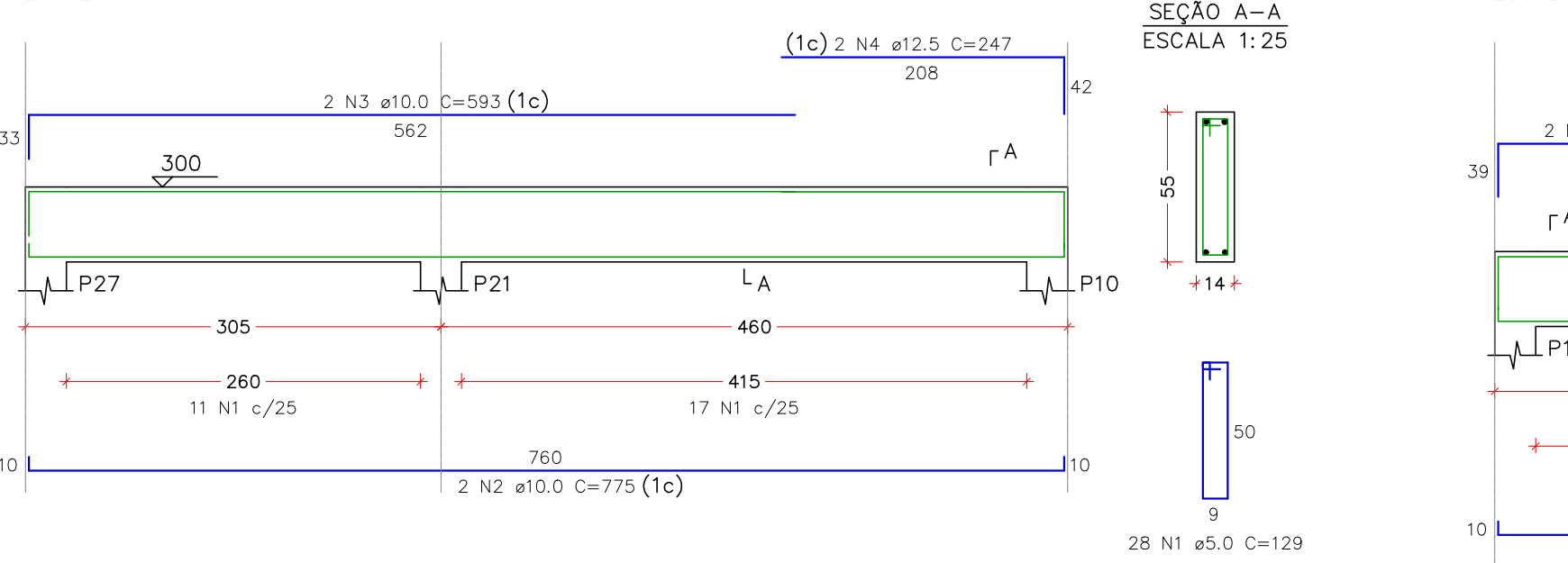
VC36
ESCALA 1:50



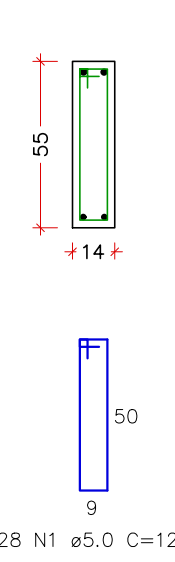
SEÇÃO A-A
ESCALA 1:25



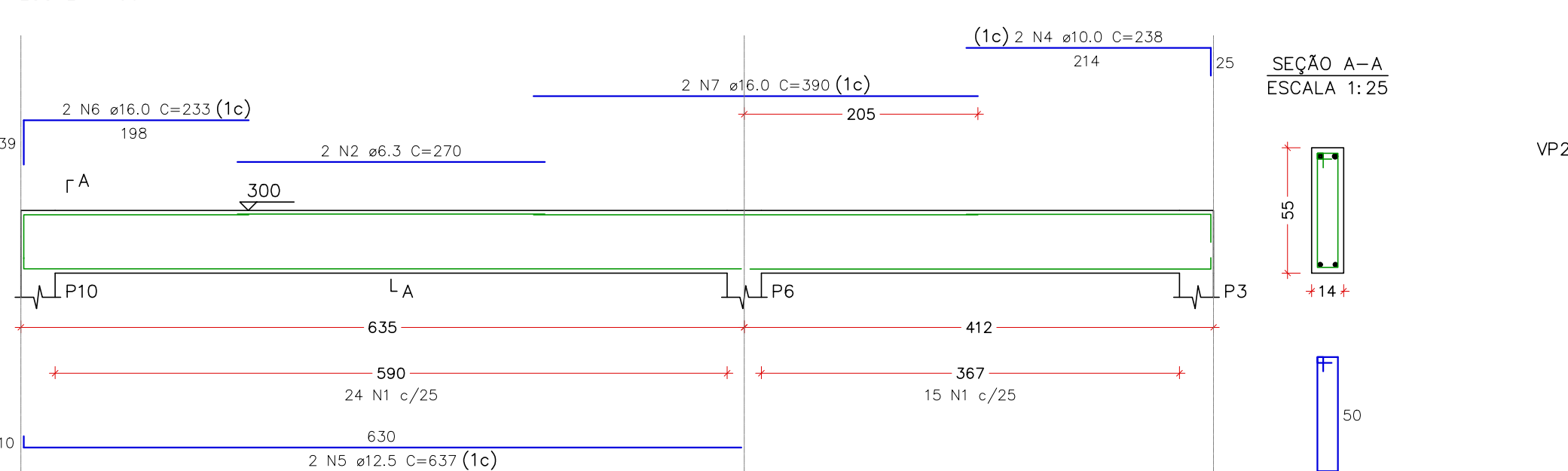
VC37
ESCALA 1:50



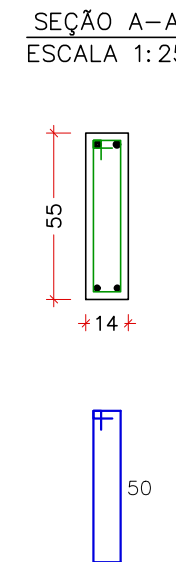
SEÇÃO A-A
ESCALA 1:25



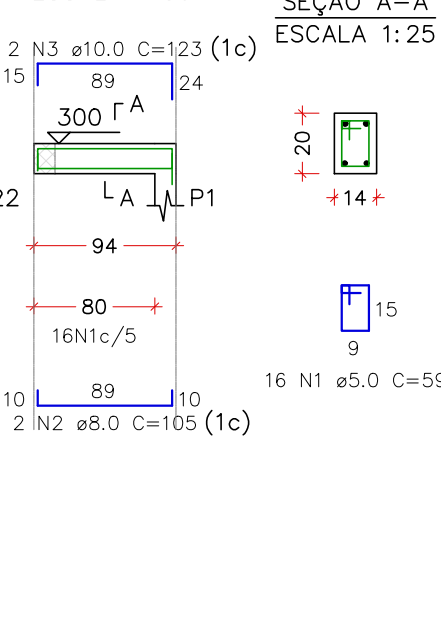
VC38
ESCALA 1:50



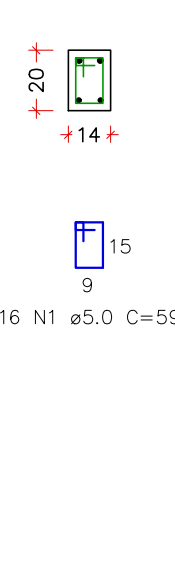
SEÇÃO A-A
ESCALA 1:25



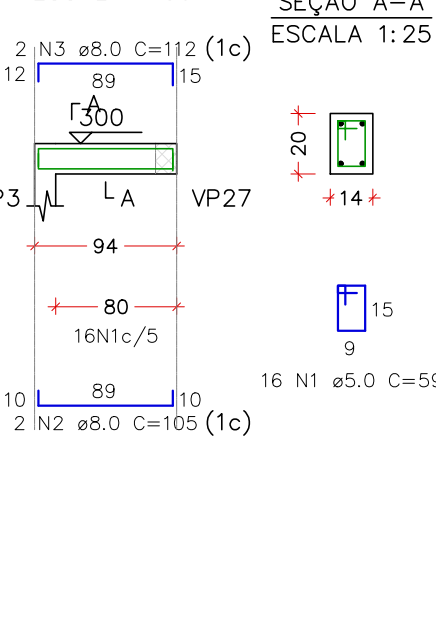
VP1
ESCALA 1:50



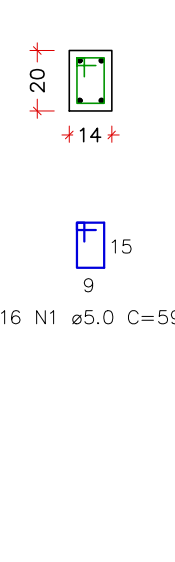
SEÇÃO A-A
ESCALA 1:25



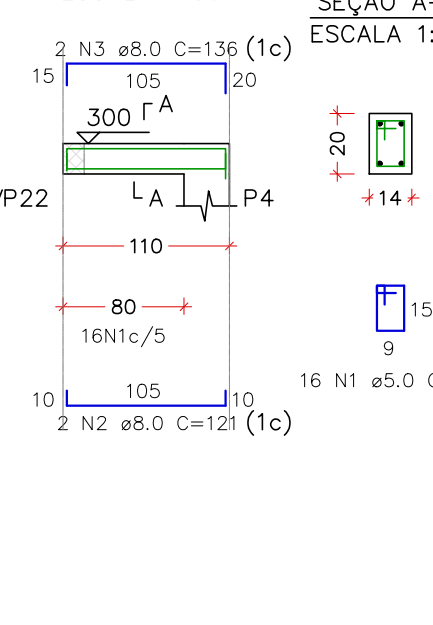
VP2
ESCALA 1:50



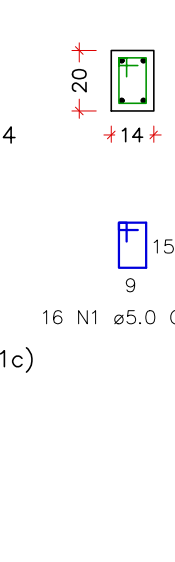
SEÇÃO A-A
ESCALA 1:25



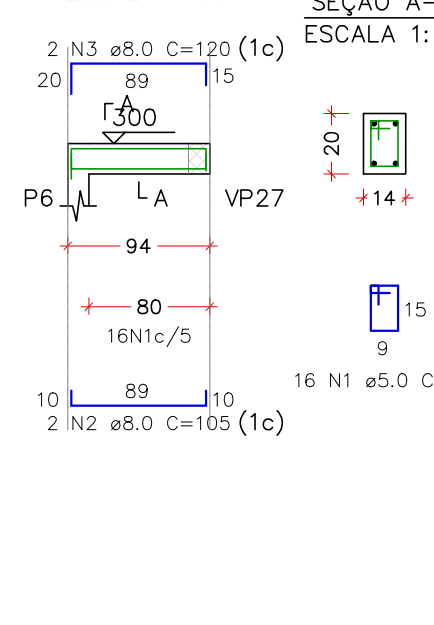
VP3
ESCALA 1:50



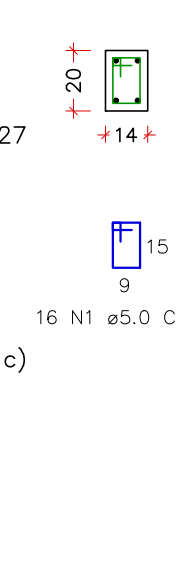
SEÇÃO A-A
ESCALA 1:25



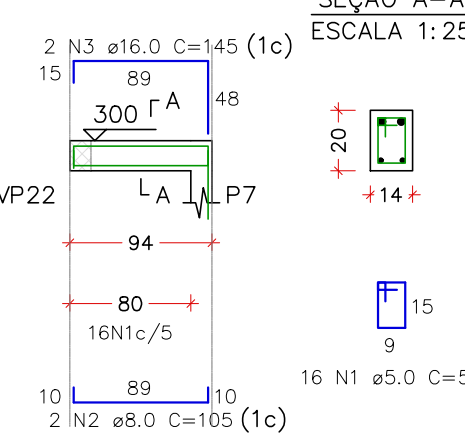
VP4
ESCALA 1:50



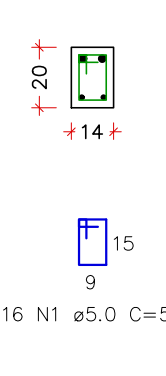
SEÇÃO A-A
ESCALA 1:25



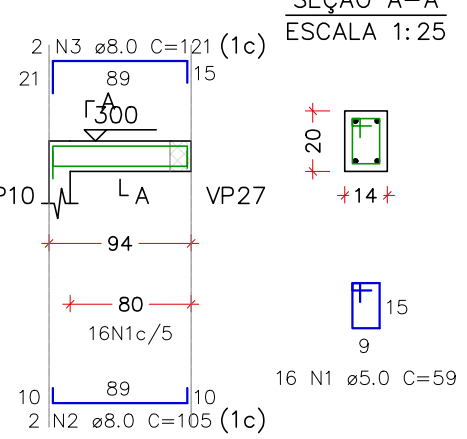
VP5
ESCALA 1:50



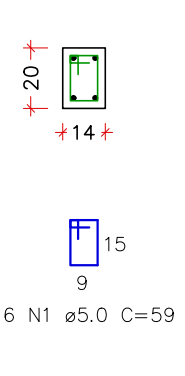
SEÇÃO A-A
ESCALA 1:25



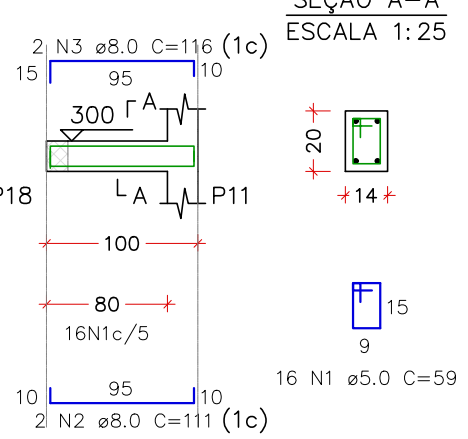
VP6
ESCALA 1:50



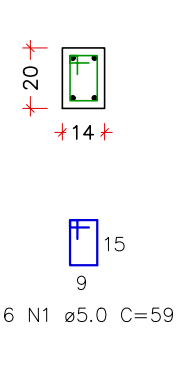
SEÇÃO A-A
ESCALA 1:25



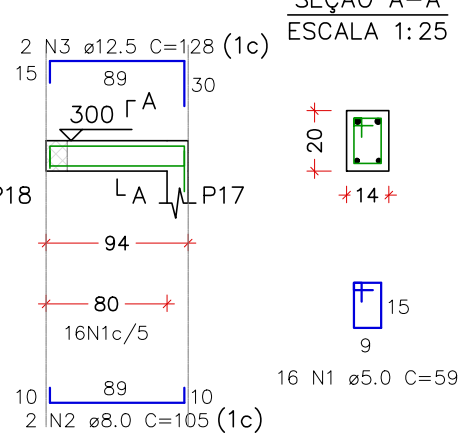
VP7
ESCALA 1:50



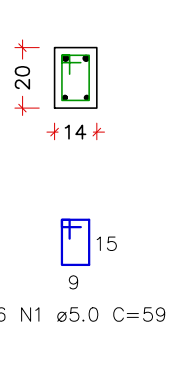
SEÇÃO A-A
ESCALA 1:25



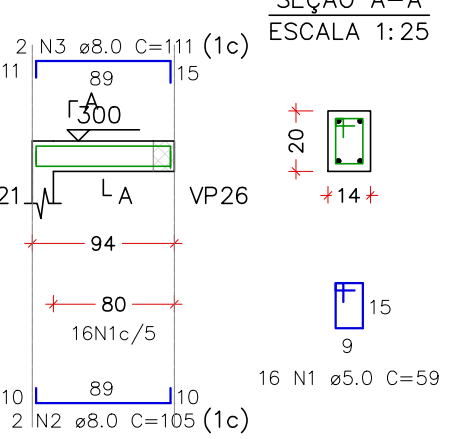
VP8
ESCALA 1:50



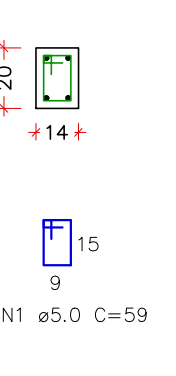
SEÇÃO A-A
ESCALA 1:25



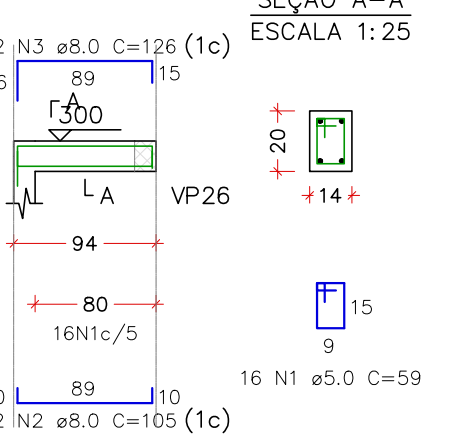
VP9
ESCALA 1:50



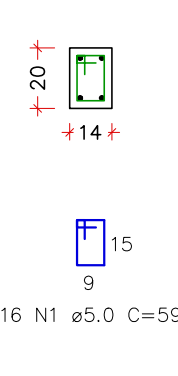
SEÇÃO A-A
ESCALA 1:25



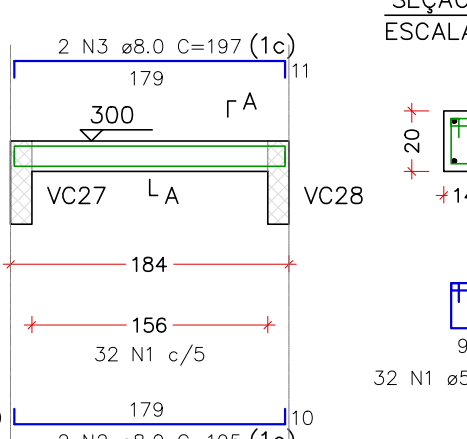
VP10
ESCALA 1:50



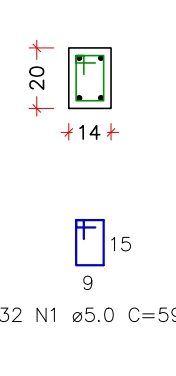
SEÇÃO A-A
ESCALA 1:25



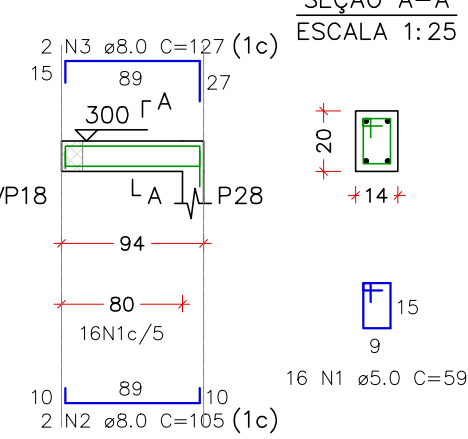
VP11
ESCALA 1:50



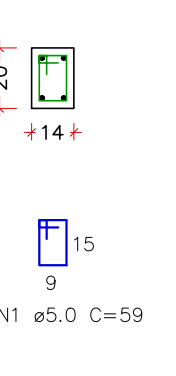
SEÇÃO A-A
ESCALA 1:25



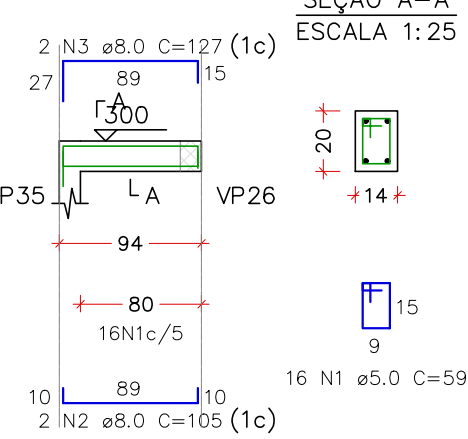
VP12
ESCALA 1:50



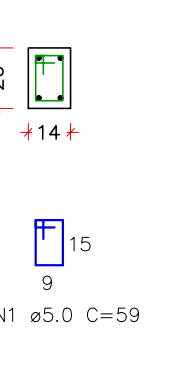
SEÇÃO A-A
ESCALA 1:25



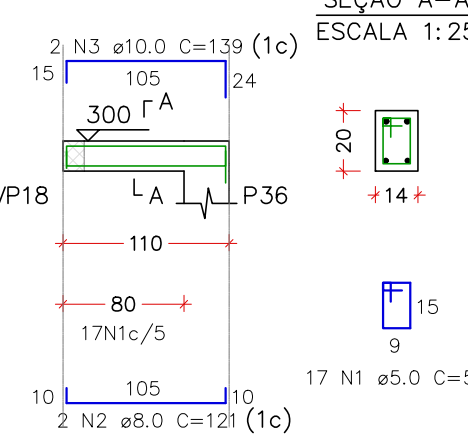
VP13
ESCALA 1:50



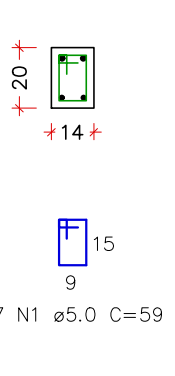
SEÇÃO A-A
ESCALA 1:25



VP14
ESCALA 1:50



SEÇÃO A-A
ESCALA 1:25



RELAÇÃO DO AÇO						
ELEMENTO	AÇO	N	DIAM (mm)	QUANT	C.UNIT (cm)	C.TOTAL (cm)
VC31	CA60	1	5.0	42	129	5418
	CA50	2	6.3	2	280	560
	CA50	3	6.3	2	175	350
	CA50	4	10.0	2	1124	2248
	CA50	5	10.0	2	153	306
VC32	CA60	6	10.0	2	171	342
	CA50	7	16.0	2	400	800
	CA60	1	5.0	12	129	1548
	CA50	2	10.0	2	344	688
	CA50	3	10.0	2	357	714
VC33	CA60	1	5.0	42	129	5418
	CA50	2	6.3	2	214	428
	CA50	3	6.3	2	260	520
	CA50	4	10.0	2	1134	2268
	CA50	5	10.0	2	186	372
VC34	CA60	6	10.0	2	168	336
	CA50	7	12.5	2	370	740
	CA60	1	5.0	56	129	7224
	CA60	2	5.0	6	47	282
	CA50	3	6.3	3	103	309
VC35	CA50	4	10.0	2	793	1586
	CA50	5	10.0	2	612	1224
	CA50	6	10.0	4	108	432
	CA50	7	12.5	2	213	426
	CA60	1	5.0	38	129	4902
VC36	CA50	2	10.0	2	1049	2098
	CA50	3	10.0	2	875	1750
	CA50	4	12.5	2	219	438
	CA60	1	5.0	43	129	5547
	CA50	2	6.3	2	217	434
VC37	CA50	3	6.3	2	245	490
	CA50	4	10.0	2	161	322
	CA50	5	10.0	2	161	322
	CA50	6	12.5	2	197	394
	CA50	7	10.0	2	400	800
VC38	CA60	1	5.0	28	129	3612
	CA50	2	10.0	2	775	1550
	CA50	3	10.0	2	593	1186
	CA50	4	12.5	2	247	494
	CA60	1	5.0	39	129	5031
VP1	CA50	2	6.3	2	270	540
	CA50	3	10.0	2	413	826
	CA50	4	10.0	2	238	476
	CA50	5	12.5	2	637	1274
	CA50	6	16.0	2	233	466
VP4	CA50	7	16.0	2	390	780
	CA60	1	5.0	16	59	944
	CA50	2	8.0	2	105	210
	CA50	3	10.0	2	123	246
	CA60	1	5.0	16	59	944
VP6	CA50	2	8.0	2	105	210
	CA50	3	8.0	2	105	210
	CA50	4	8.0	2	105	210
	CA50	5	8.0	2	105	210
	CA50	6	8.0	2	105	210
VP7	CA60	1	5.0	16	59	944
	CA50	2	8.0	2	105	210
	CA50	3	8.0	2	105	210
	CA50	4	8.0	2	105	210
	CA50	5	8.0	2	105	210
VP8	CA50	6	8.0	2	105	210
	CA50	7	8.0	2	105	210
	CA50	8	8.0	2	105	210
	CA50	9	8.0	2	105	210
	CA50	10	8.0	2	105	210
VP9	CA50	11	8.0	2	105	210
	CA50	12	8.0	2	105	210
	CA50	13	8.0	2	105	210
	CA50	14	8.0	2	105	210
	CA50	15	8.0	2	105	210
VP10	CA50	16	8.0	2	105	210
	CA50	17	8.0	2	105	210
	CA50	18	8.0	2	105	210
	CA50	19	8.0	2	105	210
	CA50	20	8.0	2	105	210
VP13	CA60	1	5.0	32	59	1888
	CA50	2	8.0	2	105	210
	CA50	3	8.0	2	105	210
	CA50	4	8.0	2	105	210
	CA50	5	8.0	2	105	210
VP14	CA60	1	5.0	17	59	1003
	CA50	2	8.0	2	105	210
	CA50	3	10.0	2	127	254
	CA50	4	10.0	2	139	278
	CA50	5	10.0	2	139	278